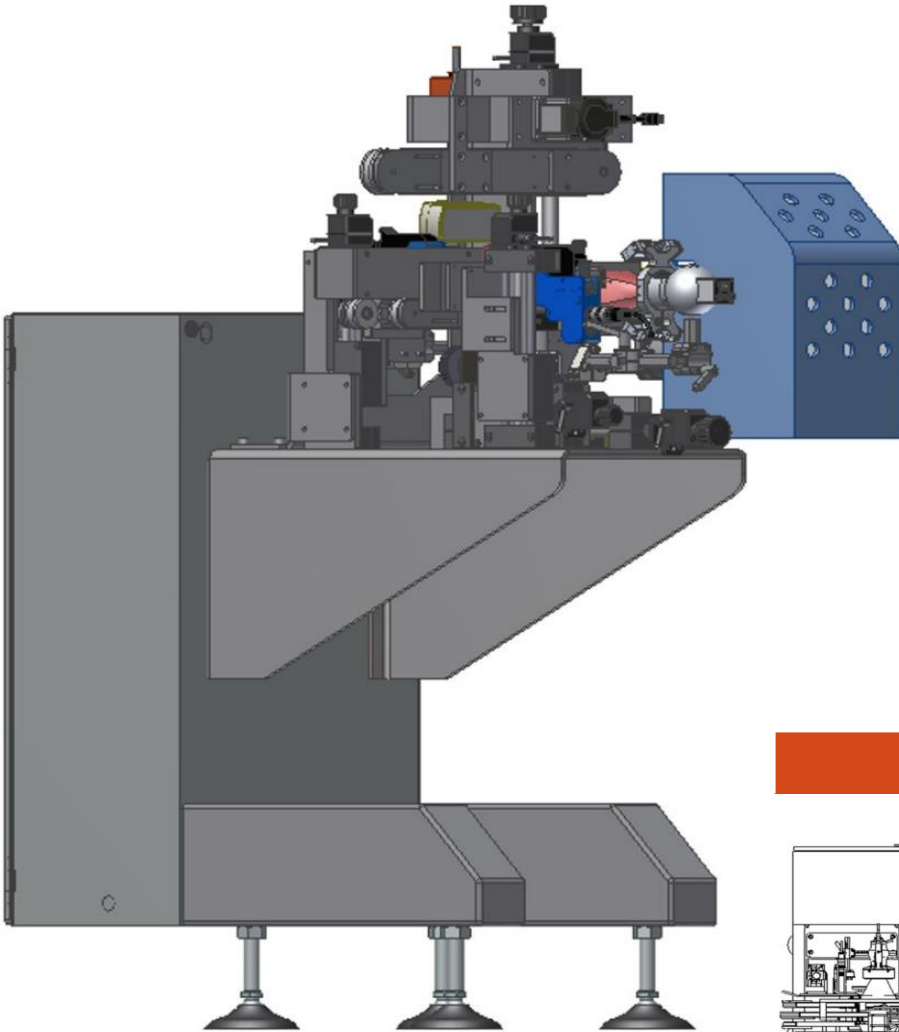


Multibox S

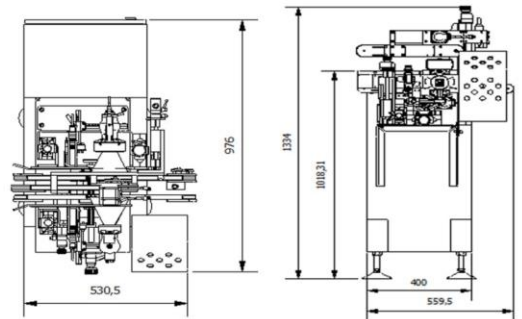


GERMARK
IDENTIFICATION SOLUTIONS

Machine Specifications



Dimensions: S

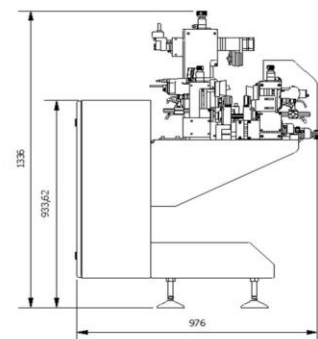
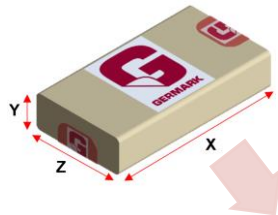


Product to be labelled

X: From 65mm to 200mm

Y: From 20mm to 200mm

Z: From 30mm to 200mm



General Features

Serialisation Ready	Serialisation (with partner)
Ergonomics	
Conveying System	Servo driven upper and lower belts
Maximum line speed	60 m/min
Changes of format	No tools required , Threading spindles, digital display
Dimensions of HMI	3,5"
Configurable Software	Recipes for diferent products
Swing arm electric panel	Easy access
Ejection station trays	Serial print

Technical data

Voltage/Frequency	230 VAC - 50 Hz
Dimensions SVTE + CW	2440 x 450 x 2150
Weight	50 Kg
Air pressure	6 bar

S - Serialisation P&V

Printer (ordered optionally)	Videojet Wolke OEM600 as standard single or twin as option
Camera and software	Prepared for serialisation ready
Supports and accesories	Brackets, guides, sensors
Integration	

Including technical documentation of the equipament

User's guide

Technical guide

Detailed parts

Electrical schemas

Declaration of conformity and market CE